

Accessories



LIFESTYLE  TRIMCO

152 West 25th Street, New York, NY 10001
212-627-2809 • www.lfs-trimco.com • 2009 © Lifestyle Trimco



STYLE # SH28

SIZE

21" High male form with
15" Wide shoulder

FINISH

Covered in green dupioni silk.
Other finishes are available.

DESCRIPTION

Male accessory form with
abstract head.

SHOWN WITH

12" Diameter MTB12 metal
trumpet base in antique brass

NOTE

Fabrics, metals and base
material can be customized.

HEADS & HANDS



STYLE # LDH-24

SIZE

24" high image far right

FINISH

Covered in dupioni pink silk
Other finishes are available.

DESCRIPTION

Millinery women's abstract
display head

SHOWN WITH

5 1/2" Diameter x 1" High
acrylic base

NOTE

Also available in 12" and 18"
Height (LDH-12 and LDH-
18). Fabrics, metals
and base material can be
customized.



STYLE # MDH24

SIZE

24" High male head
far right

FINISH

Covered in gold dupioni silk.
Other finishes are available.

DESCRIPTION

Male millinery head

SHOWN WITH

6" Diameter x 1" High
acrylic base

NOTE

Also available in 12" Height
(MDH12 far left) and 18"
Height (MDH18 center).
Fabrics, metals and base
material can be customized.



STYLE # LH-2

SIZE

18" High

FINISH

Wood head and polished
nickel base. Other finishes
are available.

DESCRIPTION

Millinery head,
non-adjustable base

SHOWN WITH

Polished nickel base

NOTE

Fabrics, metals and base
material can be customized.



STYLE # LF2

SIZE

o.a. ht 14", shoulder 15"

FINISH

Covered in cream linen
Other finishes are
available.

DESCRIPTION

Female head and
shoulder mache form

SHOWN WITH

Sq metal base in
polished chrome

NOTE

Additional body fabric and
base finishes available



STYLE # MRDH24 / MRDH18 / MRDH12

SIZE

o.a. ht - 24" Tall / 18" Tall / 12" Tall

FINISH

Fiberglass. Other finishes are available.

DESCRIPTION

Men's retro display heads

NOTE

Fabrics, metals and base material can be customized.

STYLE # LDH-12 / LDH-18 / LDH-24

SIZE

o.a. ht - 12" / 18" / 24"
Neck - 11 1/2"

FINISH

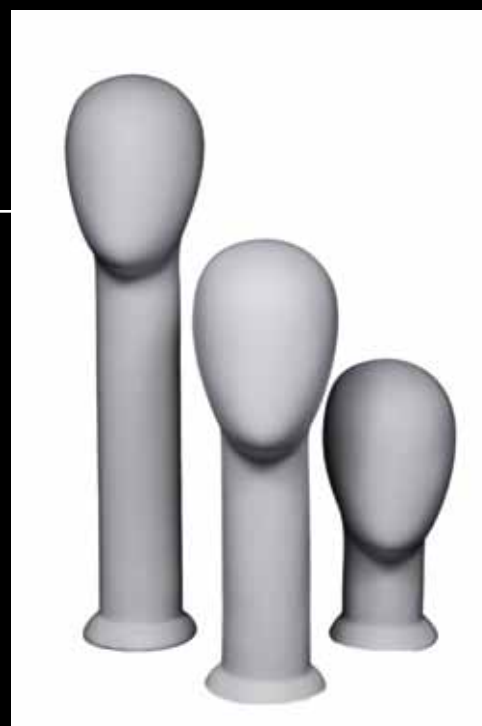
Shown matt white.

DESCRIPTION

Ladies egg heads

NOTE

Finishes can be customized.



STYLE # MDH-12 / MDH-18 / MDH-24

SIZE

o.a. ht - 12" Tall / 18" Tall / 24" Tall
Neck 14 1/4"

FINISH

Shown matt white

DESCRIPTION

Male egg heads

NOTE

Finishes can be customized.

HEADS & HANDS

**STYLE # FEHF****SIZE**

o.a. ht 18", Neck 12"
Shoulder 16 1/2"

FINISH

Shown gloss white

DESCRIPTION

Ladies egghead bust

SHOWN WITH

10" Diameter countertop
trumpet base 7/8" x 24"
upright

NOTE

Finishes can be
customized

**STYLE # MRBF1****SIZE**

o.a. ht 21", Neck 15 1/2"
Shoulder 19 1/2"

FINISH

Fiberglass

DESCRIPTION

Men's retro bust form
with head 7/8" diameter
flange

SHOWN WITH

10" Diameter countertop
trumpet base 7/8" x 24"
upright

NOTE

Additional body fabric and
base finishes available

**STYLE # SAMH-12****SIZE**

o.a. ht 15"

FINISH

Shown high gloss white

DESCRIPTION

womens abstract head,
trumpet base

NOTE

Additional finishes
available

**STYLE # MRBF1-SPE****SIZE**

o.a. ht 20", Neck 15 1/2",
Shoulder 19 1/2", Chest 39

FINISH

Shown gloss white

DESCRIPTION

Male egghead bust

SHOWN WITH

Sq metal base in
polished chrome

NOTE

Additional finishes
available



STYLE # WMB1-6

SIZE

o.a. ht 14"

FINISH

Pecan wood stain base with beige linen hat form. Other finishes are available.

DESCRIPTION

Hat stand

NOTE

Additional base and fabrications available to customer's specifications

STYLE # MWPB64

FINISH

Brushed chrome and ebony
Other finishes are available.

DESCRIPTION

Puc base with 1 hole HF hat dome in paper mache covered in white leatherette on 917 ADJ-TS upright in brushed chrome

NOTE

Fabrics, metals and base material can be customized.



HEADS & HANDS



STYLE # LM45

SIZE: 16" High hand image in center

FINISH: Fiberglass gloss black finish. Other finishes are available.

DESCRIPTION

Women's hand and arm in fiberglass, other heights shown 21" High on left and 18 1/2" High on right

SHOWN WITH: 4" Diameter x 1/2" High acrylic base

NOTE: Fabrics, metals and base material can be customized.

STYLE # DFH-4 / DFH-8 / DFH-12

SIZE: Deco female hand
4" tall / 8" tall / 12" tall

STYLE # DMH-4 / DMH-8 / DMH-12

SIZE: Deco male hand
4" tall / 8" tall / 12" tall

FINISH: Taupe eggshell paint

DESCRIPTION: Hand displays

SHOWN WITH:
5" sq brushed bronze bases

NOTE: Finishes can be customized.



STYLE # MT235-9 / MT235-12 / MT235-16

SIZE: 9" tall / 12" tall / 16" tall

FINISH: Fiberglass gloss white finish. Other finishes are available.

DESCRIPTION: Men's right arm hand

SHOWN WITH: 4" Diameter x 1/4" High acrylic base

NOTE: Fabrics, metals and base material can be customized.



STYLE # BD9 -10

SIZE

9" x 10" Diameter

FINISH

Shown with Zebra cork,
Base 14" chrome

DESCRIPTION

Cork Belt bolsters

NOTE

Fabric, size and base can
be customized.

STYLE # BD12-10

SIZE

12" x 10" Diameter

FINISH

Brown cork,
Base 14" chrome

DESCRIPTION

Cork Belt bolsters

NOTE

Fabric, size and base can
be customized.



STYLE # MS90-4MS

SIZE

27" High form

FINISH

Outer form covered in pink dupioni silk, inner form covered in custom fabric. Other finishes are available.

DESCRIPTION

Men's open suit form

SHOWN WITH

4 antique brass metal shelves, raised neck cap, and round hub base 12" Diameter x 3" High

NOTE

Fabrics, metals and base material can be customized.



STYLE # LF50MS

SIZE

29" High form

FINISH

Outer form covered in pink dupioni silk, inner form covered in custom fabric. Other finishes are available.

DESCRIPTION

Women's open suit form

SHOWN WITH

3 pink gloss painted wood shelves, raised metal neck cap in antique brass and round hub base 12" Diameter x 3" High

NOTE

Fabrics, metals and base material can be customized.



STYLE # MJF75-7

SIZE

45" Tall

FINISH

Pink toile upper mache torso, black lacquer wood boot legs. Other finishes are available.

DESCRIPTION

Child size jockey form

SHOWN WITH

MJF75-3 child size jockey form 33" Tall on right in blue toile upper mache torso, black lacquer wood boot legs

NOTE

Additional torso fabrications and wood boot finishes available to customer's specifications



STYLE # LF105

SIZE

63" High

FINISH

Custom fabric.
Other finishes are available.

DESCRIPTION

Women's form with closed neck

SHOWN WITH

18" W x 1" Thick clear acrylic base

NOTE

Fabrics, metals and base material can be customized.



STYLE # LF87

SIZE

25" High body

FINISH

Custom fabric
Other finishes are available.

DESCRIPTION

Female accessory form with TC2 flat metal
neck top in brushed brass

SHOWN WITH

FDB12 brushed brass 12" Diameter floor base

NOTE

Fabrics, metals and base material can be customized.

STYLIZED FORMS



STYLE # SLF

SIZE

65" High

FINISH

Custom fabric
Other finishes are available.

DESCRIPTION

Floor length accessory silhouette form with closed sculpted neck.

SHOWN WITH

8" Diameter x 1" Thick clear acrylic base

NOTE

Fabrics, metals and base material can be customized.

STYLE # LFLB

SIZE

28" High body

FINISH

Custom fabric. Other finishes are available.

DESCRIPTION

Women's accessory form with TW50 domed wood neck top in black gloss

SHOWN WITH

BWFR34 12" diameter trumpet wood floor base in black gloss

NOTES

Fabrics, metals and base material can be customized.





STYLE # SLF-3QTR

SIZE

39" High body

FINISH

Custom fabric
Other finishes are available.

DESCRIPTION

Female accessory form with sculpted neck

SHOWN WITH

FHB-2 hub floor base 12" Diameter x 3" Thick brushed brass

NOTES

Fabrics, metals and base material can be customized.



STYLE # LF45

SIZE

21" High body

FINISH

Covered in pink dupioni silk.
Other finishes are available.

DESCRIPTION

Female accessory form

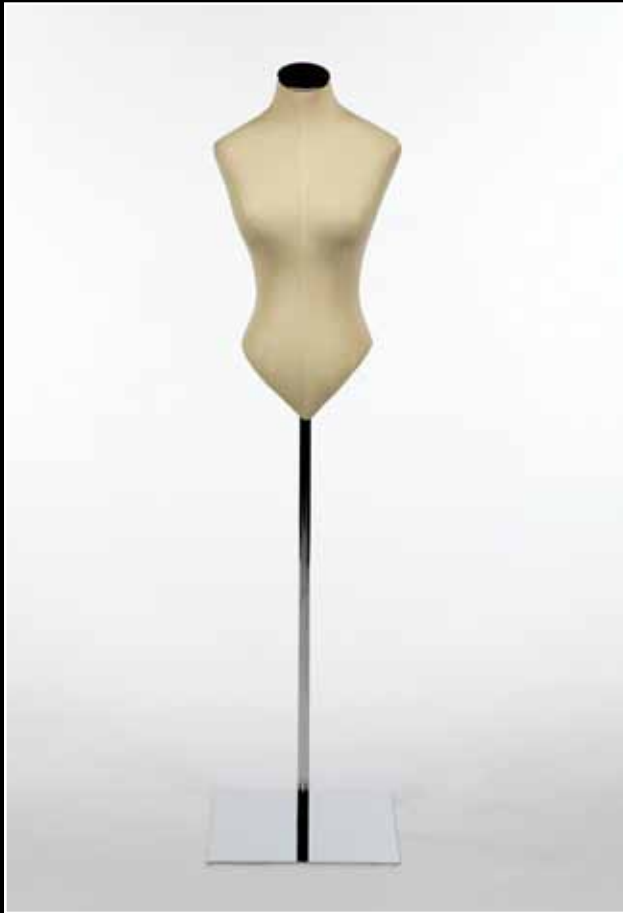
SHOWN WITH

BWR10 10" D wood base in black gloss
with TW28 wood neck cap

NOTES

Form comes in different sizes ie: LF45-9 is
20" High, the MTL10 mini is 11" High

STYLIZED FORMS



STYLE # LF51

SIZE

o.a. ht 23 1/2"

FINISH

Covered in beige linen
Other finishes are available.

DESCRIPTION

Female accessory form

SHOWN WITH

Polished chrome flat metal neck cap and sq metal base

NOTE

Additional bases and fabrications available
to customer's specifications.

STYLE # LF70

SIZE

o.a. ht 32", waist 22 1/2",
shoulder 13 3/4", chest 31 1/2"

FINISH

Covered in beige linen. Other finishes are available.

DESCRIPTION

Female accessories form

SHOWN WITH

Polished chrome flat metal neck cap
and sq metal base

NOTE

Additional bases and fabrications available to customer's
specifications. Also available in pinnable foam body





STYLE # FJFM

SIZE

20 1/2" Tall

FINISH

Pink toile upper mache torso and cream lacquer wood boot legs
Other finishes are available.

DESCRIPTION

Female mini jockey form

SHOWN WITH

Flat chrome neck cap

NOTE

Additional torso fabrications and wood boot leg finishes available to customer's specifications

MINI-FORMS



STYLE # MTL55

SIZE

14" High mini form

FINISH

Covered in dupioni silk
Other finishes are available.

DESCRIPTION

Mini form

SHOWN WITH

11" diameter flat metal base in antique bronze with flat metal neck cap

NOTE

Forms shown at varying heights, 48", 52", 58".
Forms and bases can be customized with various metals and fabrics



STYLE # MLFB18

SIZE

18" High

FINISH

Covered in beige linen

DESCRIPTION

Mini Lydia form

SHOWN WITH

Polished chrome flat metal neck cap and no base.
Smaller form MLFB12 is 12" high

NOTE

Additional bases and fabrications available to customer's specifications.
Also available in pinnable foam body



STYLE # MTL50

SIZE

14" Tall

FINISH

Covered in beige linen
Other finishes are available.

DESCRIPTION

Female mini form

SHOWN WITH

Turned wood base and flat wood neck cap in pecan stain

NOTE

Additional bases and fabrications available to customer's specifications



STYLE # M-SLF

SIZE

o.a. ht 21"

FINISH

Fiberglass cream matte
Other finishes are available.

DESCRIPTION

Mini silhouette form

SHOWN WITH

One piece base and body

NOTE

Additional body finishes available



STYLE # LF11

SIZE

16" female shoulder

FINISH

Fabric - NS, garden wide width
sateen #1709

DESCRIPTION

Female shoulder form

SHOWN WITH

TC 2-33 PC Chrome covered
neck top MB1010 10x10
polished chrome square base

NOTE

Additional bases and
fabrications available to
customer's specifications

BODY PARTS



STYLE # CH-NTB

SIZE

o.a. form ht 15", ht with stand 52", shoulder 16 1/2"

FINISH

Fiberglass cream matte
Other finishes are available.

DESCRIPTION

Accessory shoulder form

SHOWN WITH

Bronze floor base 7" x 8"
and closed neck

NOTE

Additional body and base finishes available



STYLE # LF8

SIZE

o.a. ht 17", shoulder 13", chest 35"

FINISH

Covered in beige linen
Other finishes are available.

DESCRIPTION

Female bra form

SHOWN WITH

Polished chrome flat metal neck cap and sq metal base

NOTE

Additional bases and fabrications available to customer's specifications



STYLE # LF4

SIZE

o.a. ht 15", hip 33"

FINISH

Covered in beige linen
Other finishes are available.

DESCRIPTION

Female panty form

SHOWN WITH

Polished chrome sq stand

NOTE

Additional bases and fabrications available to customer's specifications



STYLE # LF104

SIZE

o.a. ht 33", waist 23 1/2",
shoulder 14", chest 33"

FINISH

Covered in beige linen
Other finishes are available.

DESCRIPTION

Self-standing 3/4 lingerie form

SHOWN WITH

Polished chrome flat metal
neck cap

NOTE

Additional fabrications
available to customer's
specifications. Also available
in pinnable foam body



STYLE # CH-BTH

SIZE

Size 4, o.a. ht 11", waist 22 1/2"

FINISH

Fiberglass cream matte
Other finishes are available.

DESCRIPTION

Accessory torso form

SHOWN WITH

No base, free standing

NOTE

Additional body finishes available



STYLE # LF9

SIZE

Chest 33"

FINISH

Covered in beige linen
Other finishes are available.

DESCRIPTION

Female bra form

SHOWN WITH

Additional stackable form

NOTES

Additional fabrications available
to customer's specifications



STYLE # RFSR8

SIZE

6"-8"-12" High

FINISH

Antique bronze metal finish
Other finishes are available.

DESCRIPTION

8" Diameter top flat risers,
various heights, 4" Diameter base.
All in antique bronze metal

NOTE

Optional metal finishes available
to customer specifications

FIXTURE STANDS



STYLE # OAMSR48

SIZE

9"-11"-15" heights to highest end of slant

FINISH

Antique bronze metal finish
Other finishes are available.

DESCRIPTION

Elliptical angled shoe riser with heel stops in antique bronze metal. 8" Long oval top, 4" Diameter base

NOTE

Additional metal finishes available to customer's specifications



STYLE # T50S / T75S / T100S

SIZE

19.5" high
29.5" high
39.5" high

FINISH

Satin steel
Other finishes are available.

DESCRIPTION

Satin riser, far left in image.

NOTE

Fabrics, metals and base material can be customized.



STYLE # V11S-FLOOR

SIZE

36" - 72" adjustable height floor fixture on left

FINISH

Antique bronze finish
Other finishes are available.

DESCRIPTION

Handbag floor stand with 6 1/2" x 8 1/4" rectangular metal base

SHOWN WITH

V12S-FLOOR stand for hats on right

NOTE

Available in additional metal finishes to customer's specifications



STYLE # V12S-SN

SIZE

12"-24" adjustable height center image

FINISH

Antique bronze finish
Other finishes are available.

DESCRIPTION

Counter top hat stand with 4 1/2" x 5" rectangular metal base

SHOWN WITH

V11S-SN handbag stand on left and V10SB-FF shoe stand on right

NOTE

Additional metal finishes available to customer's specifications



STYLE # WDG

SIZE

WDG-3874: 16x14 / CWG-3875: 18x16
SPG-3873: 14x12 / BWG-2876: 20x18

FINISH

High gloss super white, dove white,
china white, bone white

DESCRIPTION

flat table, shelf accessory/ folded
presentation riser

SHOWN WITH

polished chrome rods

NOTE

Sizes and finishes can be customized

STYLE # 4087

SIZE

4087-12x18x2
4088-10x16x2
4099-8x14x2

FINISH

High Gloss , Bone White

DESCRIPTION

Display tray with antler handles

SHOWN WITH

Antler Handles and Chrome Square Feet

NOTE

Custom Sizes and finishes available



FIXTURE STANDS

**STYLE # 3168**

SIZE
14"-26" adjustable
upright height

FINISH
Shown in polished chrome

DESCRIPTION
Counter top T stand

SHOWN WITH
5" x5" Sq base

NOTE
Additional metal finishes
available to customer's
specifications

**STYLE # 3560**

SIZE
14"-26" adjustable
upright height

FINISH
Shown in polished chrome

DESCRIPTION
5 tie/scarf displayer

SHOWN WITH
8 1/4" Sq base

NOTE
Additional metal finishes
available to customer's
specifications

**STYLE # 3505**

SIZE
6" x 17 1/2"

FINISH
Shown in matte finish

DESCRIPTION
Tie rack

NOTE
Additional metal finishes
available to customer's
specifications



LIFESTYLE  TRIMCO

152 West 25th Street, New York, NY 10001
212-627-2809 • www.lfs-trimco.com • 2009 © Lifestyle Trimco